

Captivate Quick Guide

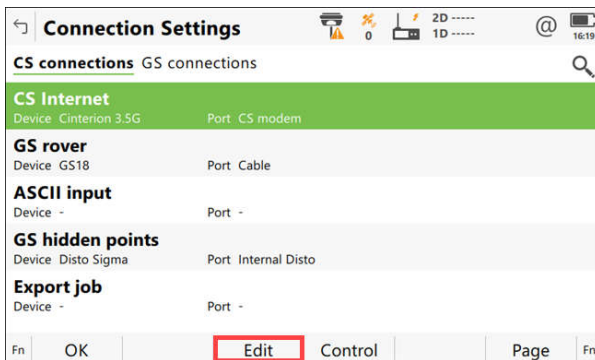
CS20 WiFi Connection

This Quick Guide will cover the CS20 connection to a WiFi network

If the CS20 is connected to the internet through Captivate it is required to turn off this connection.

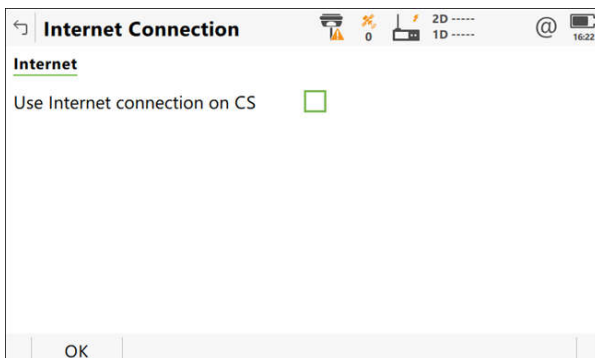
1. Navigate to Connection Settings – CS Connections Page by selecting the following from the Home Screen

Settings > Connections > All other Connections

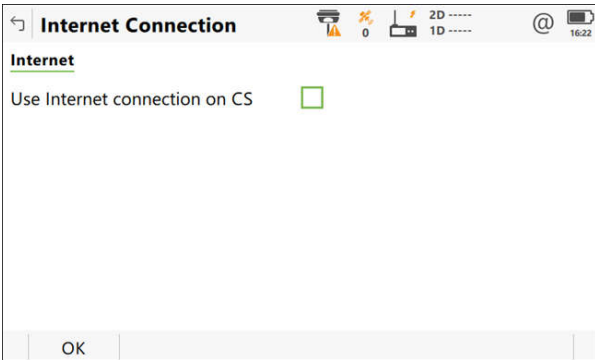


2. Select CS Internet

THEN select F3 – Edit



3. Verify the option Use Internet connection on CS is **UNCHECKED**



4. Verify the option Use Internet connection on CS is **UNCHECKED**

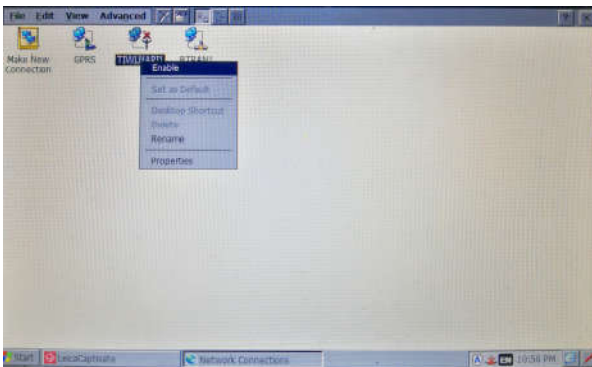
THEN return to the Home Screen

Enter Windows by holding down the FN key and the Back key

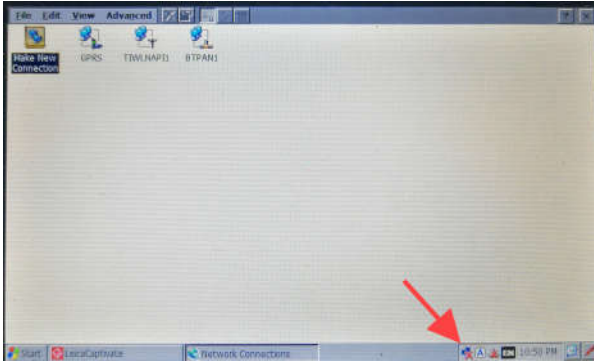
5. Enter Windows by holding down the FN key and the Back key



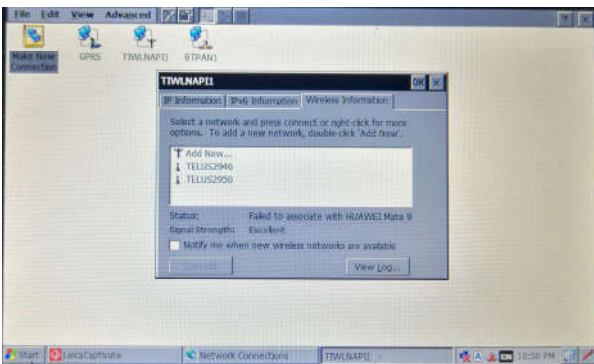
6. Open the Start Menu and select Settings > Network and Dial-up Connections



7. Enable the WiFi connection by long press and selecting enable



8. Open the WiFi settings window by double tapping the Network Connections icon in the Status Window



9. Connect as required to the WiFi network.

Then return to Leica Captivate. The system should be connected to the Internet.