

NYS DOT Reset

Request New DOT Login

Go to the following Link and select “Sign Up” in the upper right.

<http://corsaccounts.dot.ny.gov/sbc/>

Follow prompts and email instructions to get new Username and Password.

There are 2 new mountpoints being added as well that you can receive L5 and Galileo Corrections if your receivers are capable.

near_msm

net_msm_imax

Leica CS20 / Captivate

From the main screen:

- 1) Settings
- 2) Connections
- 3) RTK Rover Wizard
- 4) Select Edit Existing and pick the option you have set up to work with the NYSNET. Do not change any settings – Hit Next Until you get to the following screen.

← **RTK Rover Wizard** 0 2D -----
1D ----- @ 08:58

An RTK server is required. What would you like to do?

Create a new server

Select a server

Edit a server

Continue with current server

RTK Server **NYS DOT**

Back Next

5) Edit a server and hit next to enter the following info for new IP address and Port.

You will also have to enter your new DOT Username and Password here.

Edit server details

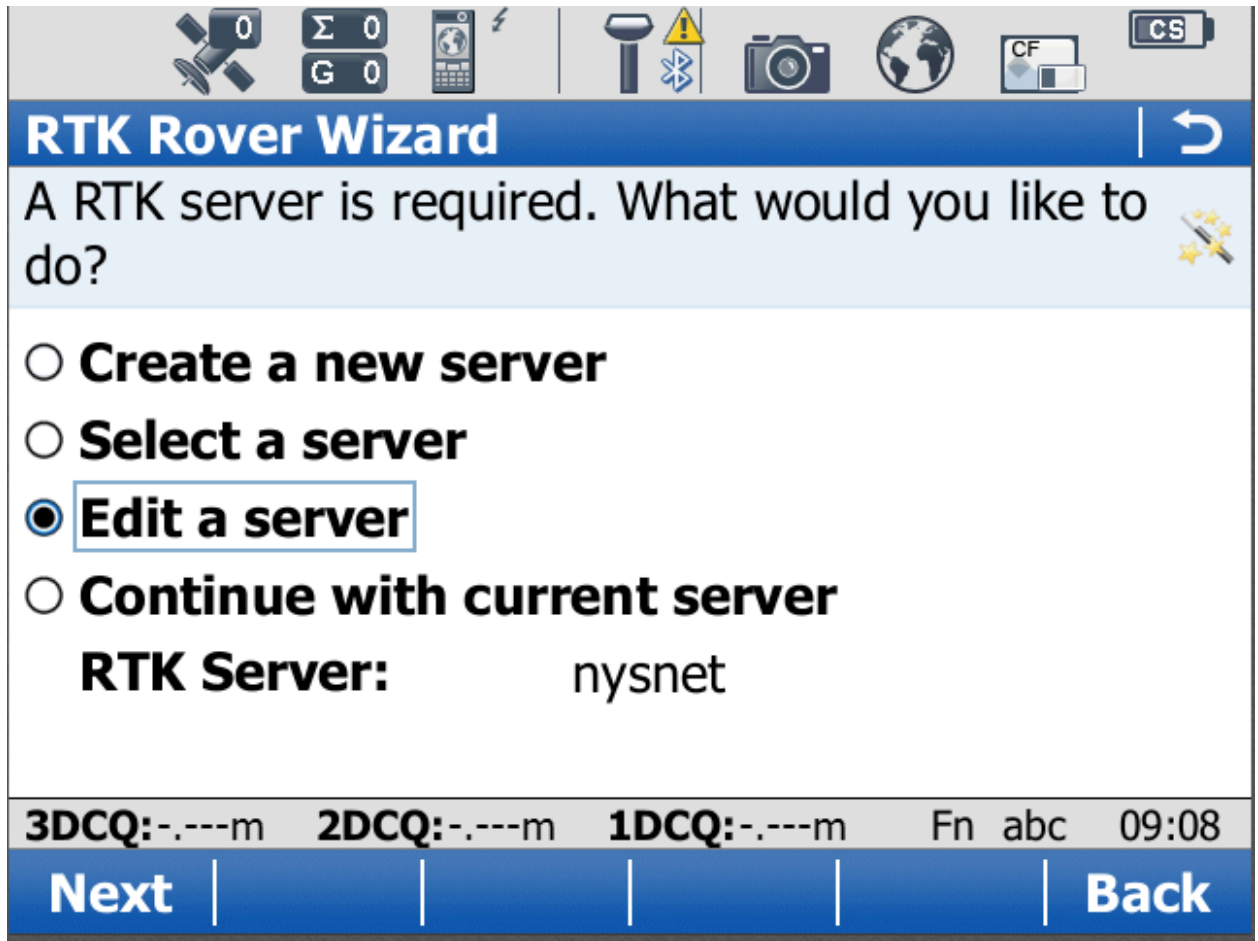
Server name	<input type="text" value="NYSDOT"/>
Address	<input type="text" value="rtn.dot.ny.gov"/>
Port	<input type="text" value="8080"/>
Use NTRIP with this server	<input checked="" type="checkbox"/>
NTRIP user ID	<input type="text" value="mts"/>
NTRIP password	<input type="password" value="•••"/>
Display password	<input type="checkbox"/>

6) Keep hitting Next until you “Finish” the wizard.

Leica CS15 / Viva Smartworx

From the Main Screen:

- 1) Instrument
- 2) GPS Settings
- 3) RTK Rover Wizard
- 4) Select Edit Existing and pick the option you have set up to work with the NYSNET. Do not change any settings – Hit Next Until you get to the following screen.



5) Edit a server and hit next to enter the following info for new IP address and Port.

You will also have to enter your new DOT Username and Password here.

The screenshot shows the 'RTK Rover Wizard' interface. At the top, there is a status bar with various icons: a satellite, a calculator showing 0, a mobile phone, a flashlight, a camera, a globe, a CF card, and a battery icon labeled 'CS'. Below this is a blue header with the title 'RTK Rover Wizard' and a refresh icon. The main area is titled 'Edit server details' and contains the following fields:

- Server name:** nysnet
- Address:** rtn.dot.ny.gov
- Port:** 8080
- Use NTRIP with this server**
- NTRIP user ID:** mts
- NTRIP password:** ***

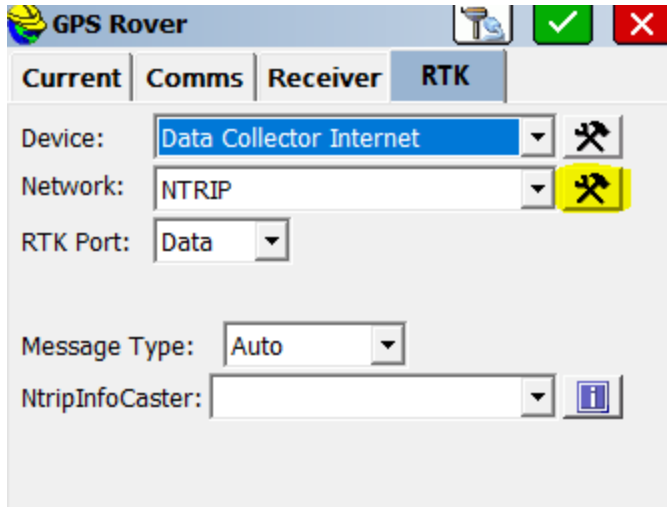
At the bottom, there is a status bar showing '3DCQ:-.---m', '2DCQ:-.---m', '1DCQ:-.---m', 'Fn abc', and '09:10'. Below this is a blue bar with 'Next' and 'Back' buttons.

6) Keep hitting Next until you "Finish" the wizard.

Carlson Surveyor2

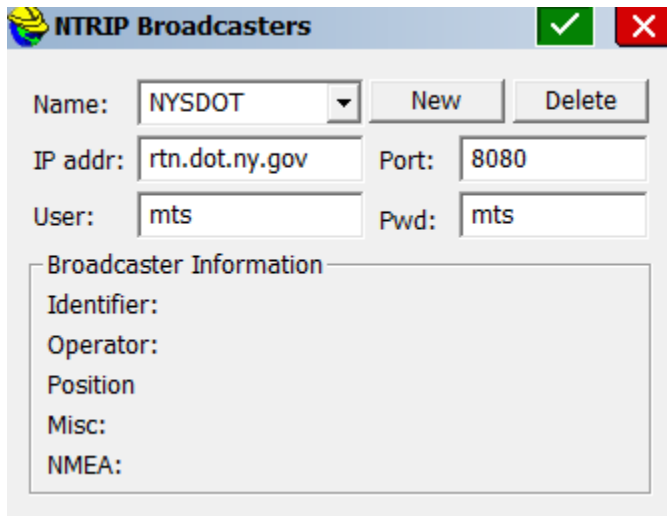
From the main screen:

- 1) Select "Equip" Tab
- 2) GPS Rover
- 3) RTK Tab
- 4) Select Wrenches next to NTRIP



5) Enter the following info for new IP address and Port.

You will also have to enter your new DOT Username and Password here.



6) Green Check to Continue and Keep hitting Green check until back to main screen